

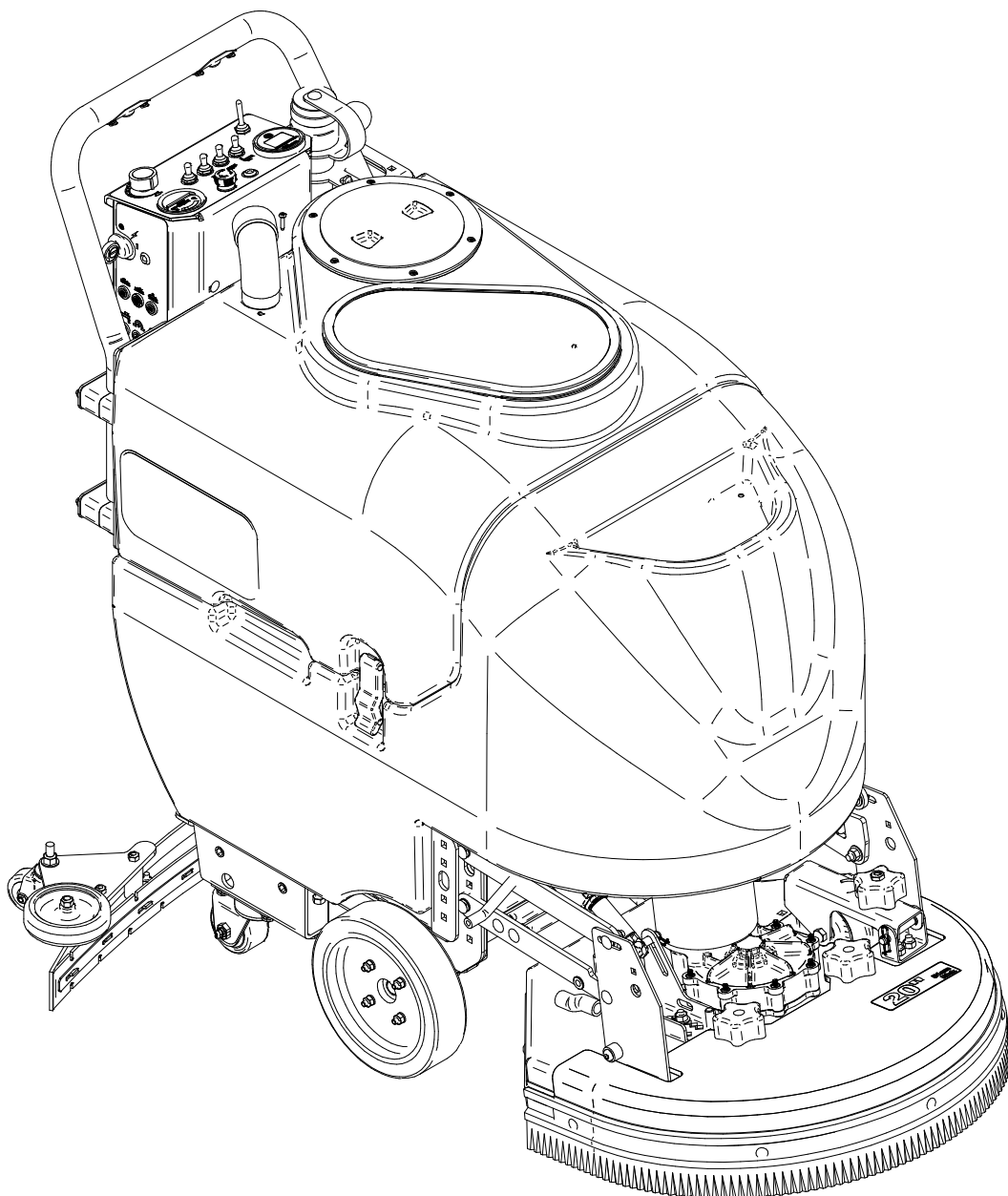


WD20
Walk Behind Scrubber

WD17
Walk Behind Scrubber

Parts Manual (EN)

Models:
17" & 20" Disk



Read the Operators Manual
before using the machine.



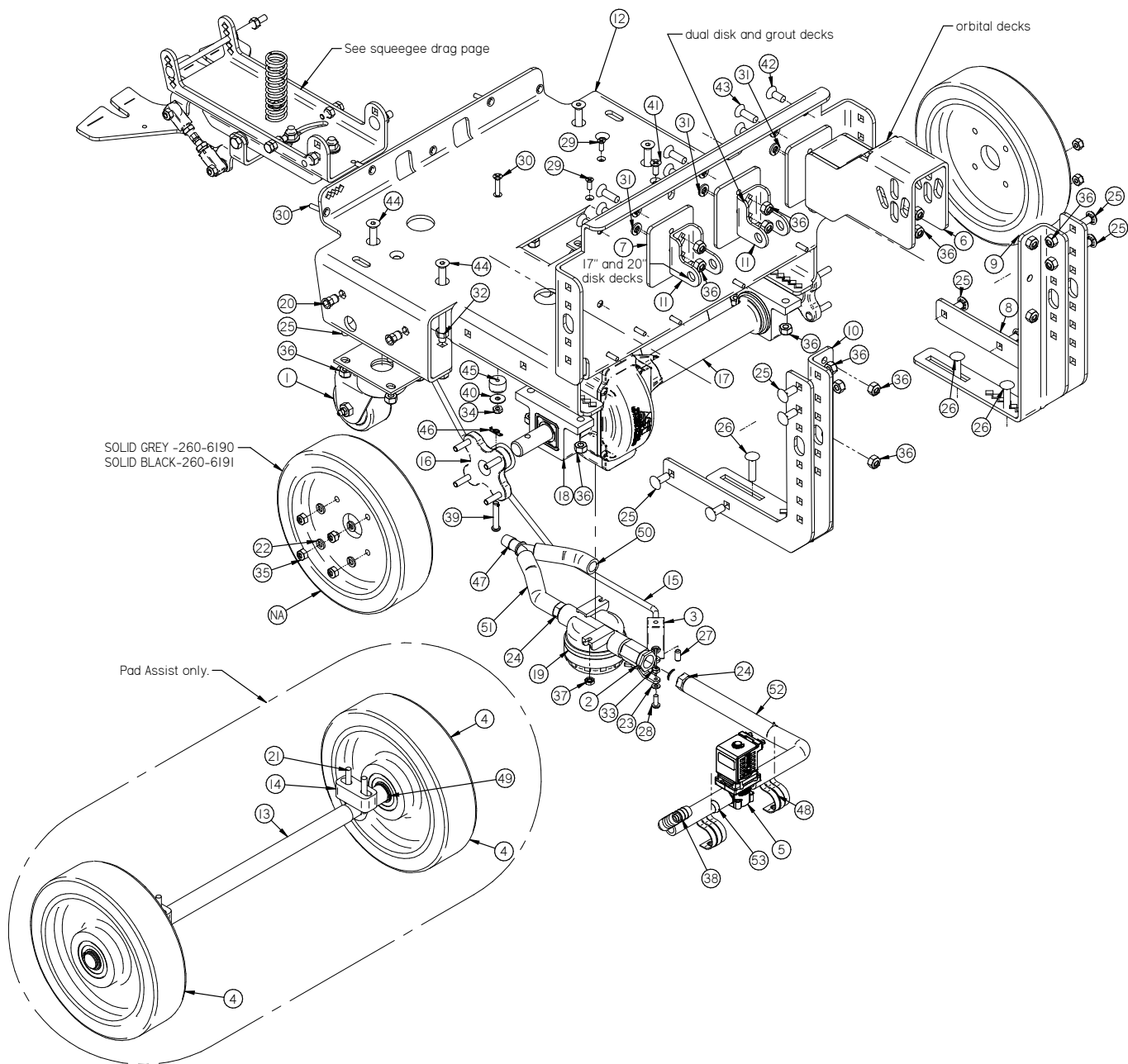
Read the Safety Messages
before servicing machine.

CONTENT

CONTENTS

Frame3
Squeegee Trail Arm4
17 Inch Disk Scrub Deck5
20 Inch Disk Scrub Deck.6
Solution Tank Assembly7
Recovery Tank Assembly.8
Squeegee Lift Bracket9
Central Command	10
Battery Pack And Chargers	11
Options	12
Squeegees	13

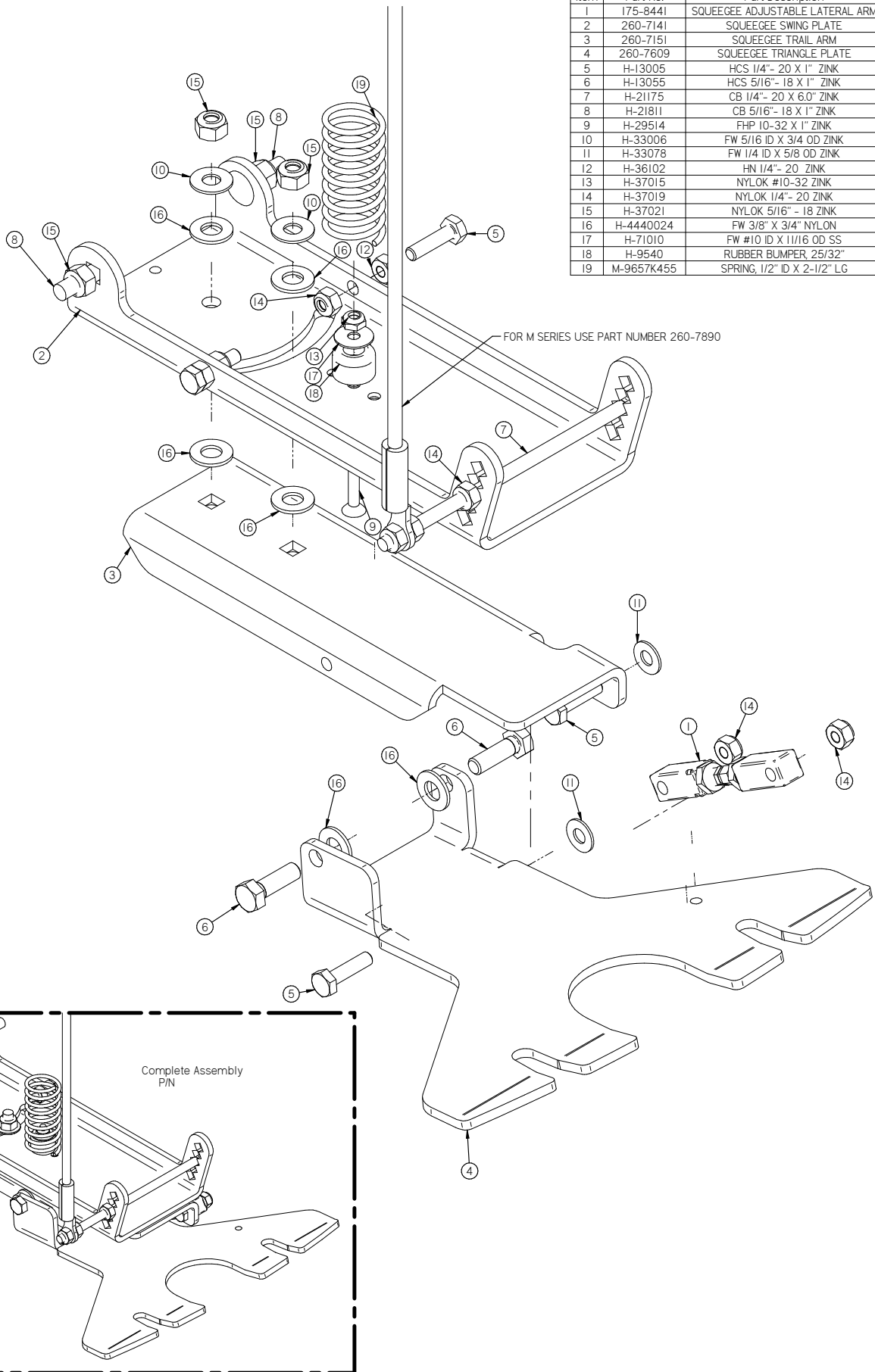
FRAME



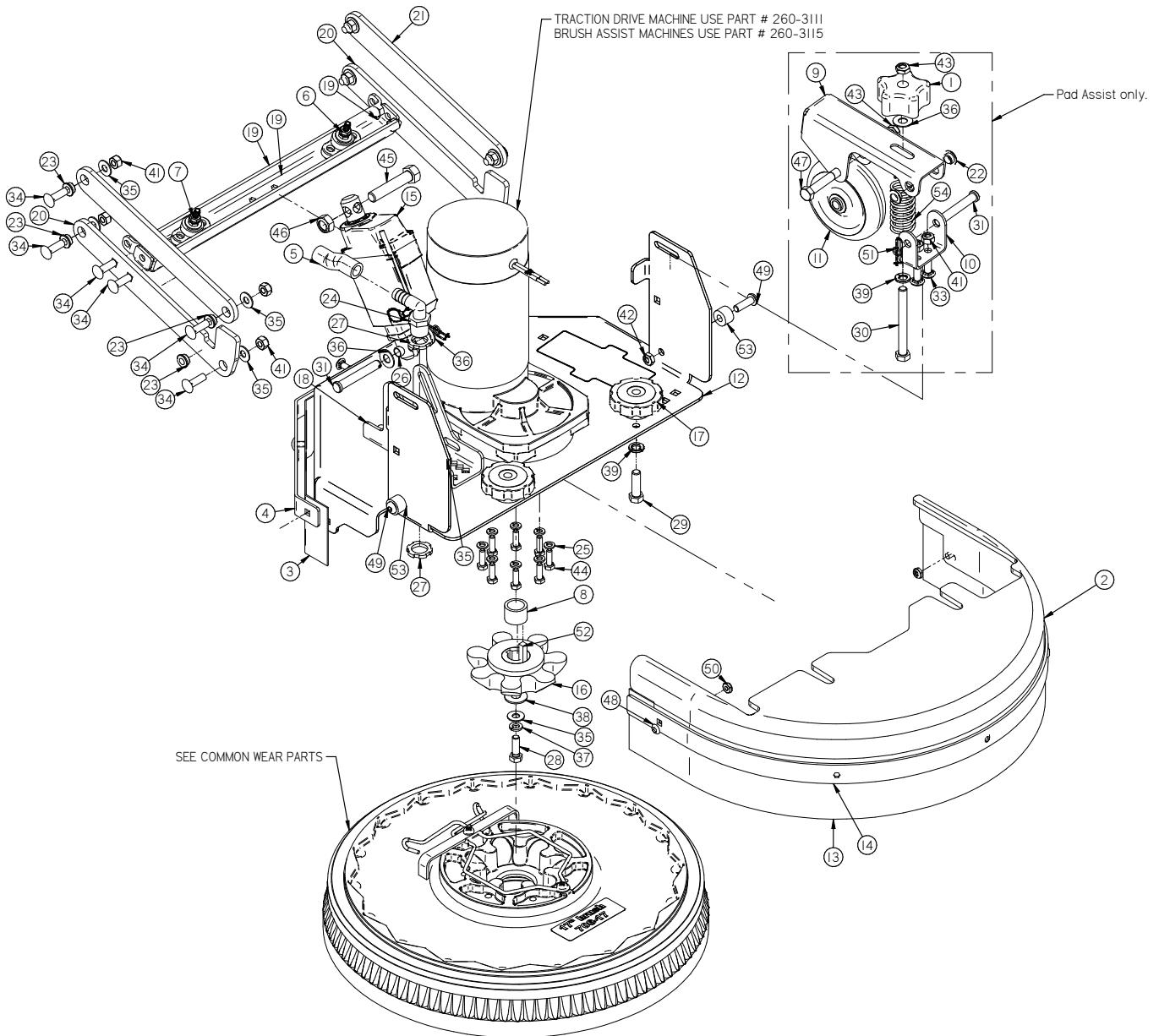
Item	Part No.	Part Description	Qty.	Item	Part No.	Part Description	Qty.
1	150-3030	CASTER	2	27	H-25382	SETSCREW, KCP, 1/4"-20 X 1/2"	1
2	150-4158	BALL VALVE, 3/8"	1	28	H-28804	PPH #6-32 X 1/2" ZINC	1
3	150-9131	CABLE GUIDE	1	29	H-29506	FHP #10-32 X 1/2" ZINC	2
4	170-6185	DRIVE TIRE, GRAY POLY NO GROVE	2	30	H-29514	FHP 10-32 X 1" ZINC	11
5	175-4500	24V VALVE	1	31	H-33620	LW 5/16" ZINC	6
6	260-0990	LIFTING BRACKET	1	32	H-36104	HN 5/16"- 18 ZINC	8
7	260-0995	THREADED PLATE	3	33	H-37010	NYLOK #6-32 SS	1
8	260-1000	FRAME BRACE	2	34	H-37015	NYLOK #10-32 ZINC	1
9	260-1001	LEFT FRAME BRACKET	1	35	H-37019	NYLOK 1/4"- 20 ZINC	12
10	260-1002	RIGHT FRAME BRACKET	1	36	H-37021	NYLOK 5/16" - 18 ZINC	35
11	260-1006	LIFTING BRACKET	2	37	H-37408	KN #10-32 ZINC	2
12	260-1102	FRAME BASE SKI I	1	38	H-54635	1/2 X 1/2 X 90 BARBED ELBOW, NYLON	1
13	260-1171	AXLE	1	39	H-66029	1/4" X 1 3/8" CLEVIS PIN	2
14	260-1270	AXLE SPACER	2	40	H-71010	FW #10 ID X 11/16 OD SS	1
15	260-2013	PUSH PULL CABLE GUIDE	1	41	H-94223	FHP 1/4"- 20 X 5/8" ZINC	1
16	260-300ID	TRANS AXLE HUB	2	42	H-94254	FHSCS 5/16"- 18 X 3/4" ZINC	4
17	260-3009	TRANS AXLE I24VI	1	43	H-94256	FHSCS 5/16"- 18 X 1" ZINC	6
18	260-3009M	AXLE MOUNT	2	44	H-94267	FHSCS 5/16"- 18 X 4-1/4" ZINC	4
19	370-9130	INLINE FILTER	1	45	H-9540	RUBBER BUMPER, 25/32"	1
20	H-00918	HCN 1/4"-20 LG	4	46	H-RUE8	RUE RING COTTER	2
21	H-0156419	1/4-20 X 3/4" ID X 2.25" LG ID U-BOLT	2	47	M-5463K727	WYE, 1/2", NYLON	1
22	H-0157797	LW 1/4" ZINC	8	48	M-9434T22	1.0 DIA One Hole Tube Clamp	2
23	H-0159717	FW #6 ZINC	1	49	M-98585A115	SNAPPING 3/4" HEAVY DUTY	4
24	H-04763	.375 NPT X .50 BARB	2	50	T-050C6000	BULK 1/2" ID X 5' CLEAR SOLUTION HOSE	1
25	H-21810	CB 5/16"- 18 X 3/4" ZINC	16	51	T-050C6000	BULK 1/2" ID X 5' CLEAR SOLUTION HOSE	1
26	H-21812	CB 5/16"- 18 X 1-1/4" ZINC	4	52	T-050C6000	BULK 1/2" ID X 5' CLEAR SOLUTION HOSE	1
				53	T-050C6000	BULK 1/2" ID X 5' CLEAR SOLUTION HOSE	1

SQUEEGEE TRAIL ARM

Item	Part No.	Part Description	Qty.
1	175-8441	SQUEEGEE ADJUSTABLE LATERAL ARM	1
2	260-7141	SQUEEGEE SWING PLATE	1
3	260-7151	SQUEEGEE TRAIL ARM	1
4	260-7609	SQUEEGEE TRIANGLE PLATE	1
5	H-13005	HCS 1/4" - 20 X 1" ZINK	4
6	H-13055	HCS 5/16" - 18 X 1" ZINK	2
7	H-21175	CB 1/4" - 20 X 6.0" ZINK	1
8	H-21811	CB 5/16" - 18 X 1" ZINK	4
9	H-29514	FHP 10-32 X 1" ZINK	1
10	H-33006	FW 5/16 ID X 3/4 OD ZINK	2
11	H-33078	FW 1/4 ID X 5/8 OD ZINK	2
12	H-36102	HN 1/4" - 20 ZINK	2
13	H-37015	NYLOK #10-32 ZINK	1
14	H-37019	NYLOK 1/4" - 20 ZINK	7
15	H-37021	NYLOK 5/16" - 18 ZINK	6
16	H-4440024	FW 3/8" X 3/4" NYLON	6
17	H-71010	FW #10 ID X 11/16 OD SS	1
18	H-9540	RUBBER BUMPER, 25/32"	1
19	M-9657K455	SPRING, 1/2" ID X 2-1/2" LG	1

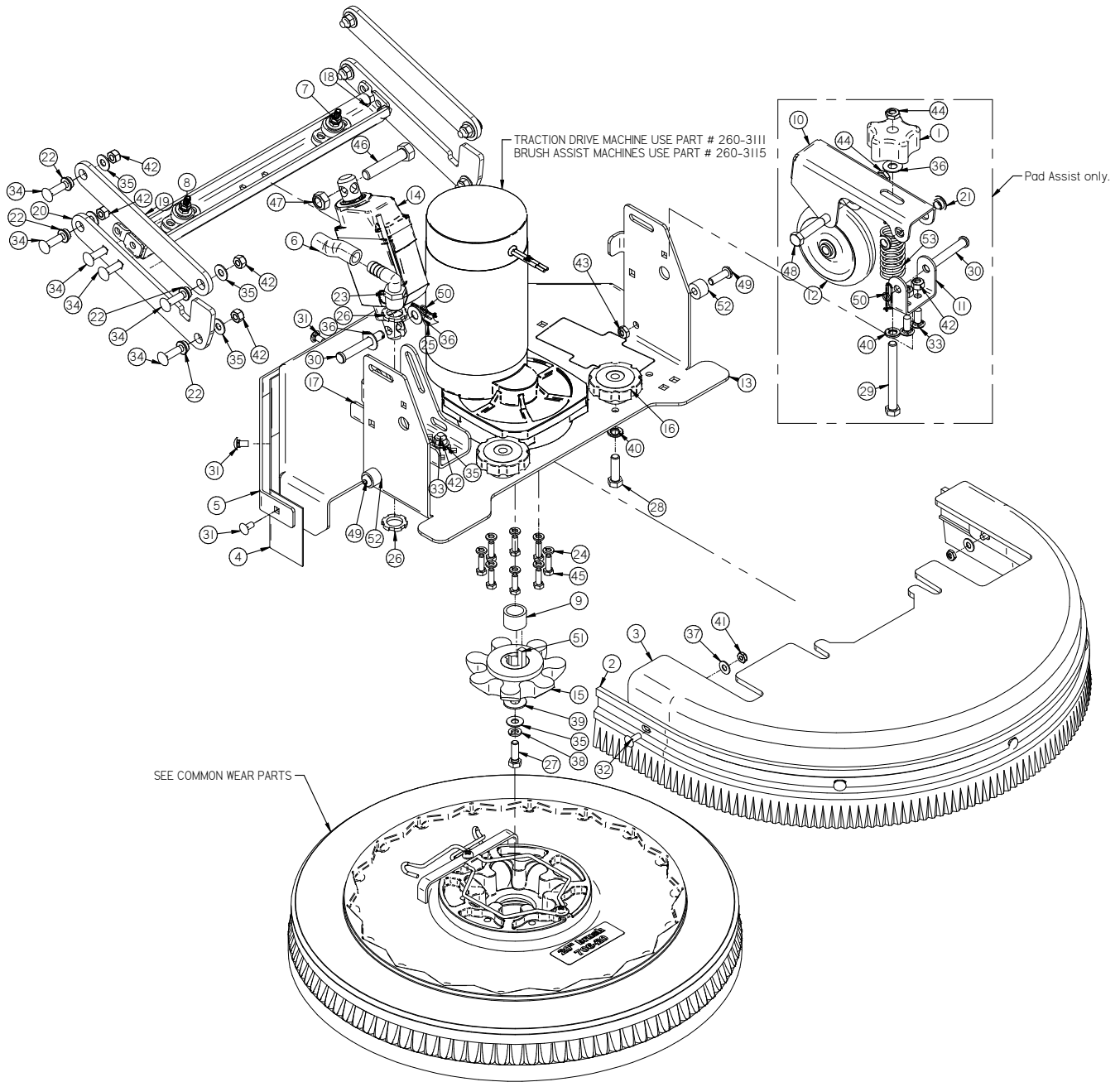


17 INCH DISK SCRUB DECK



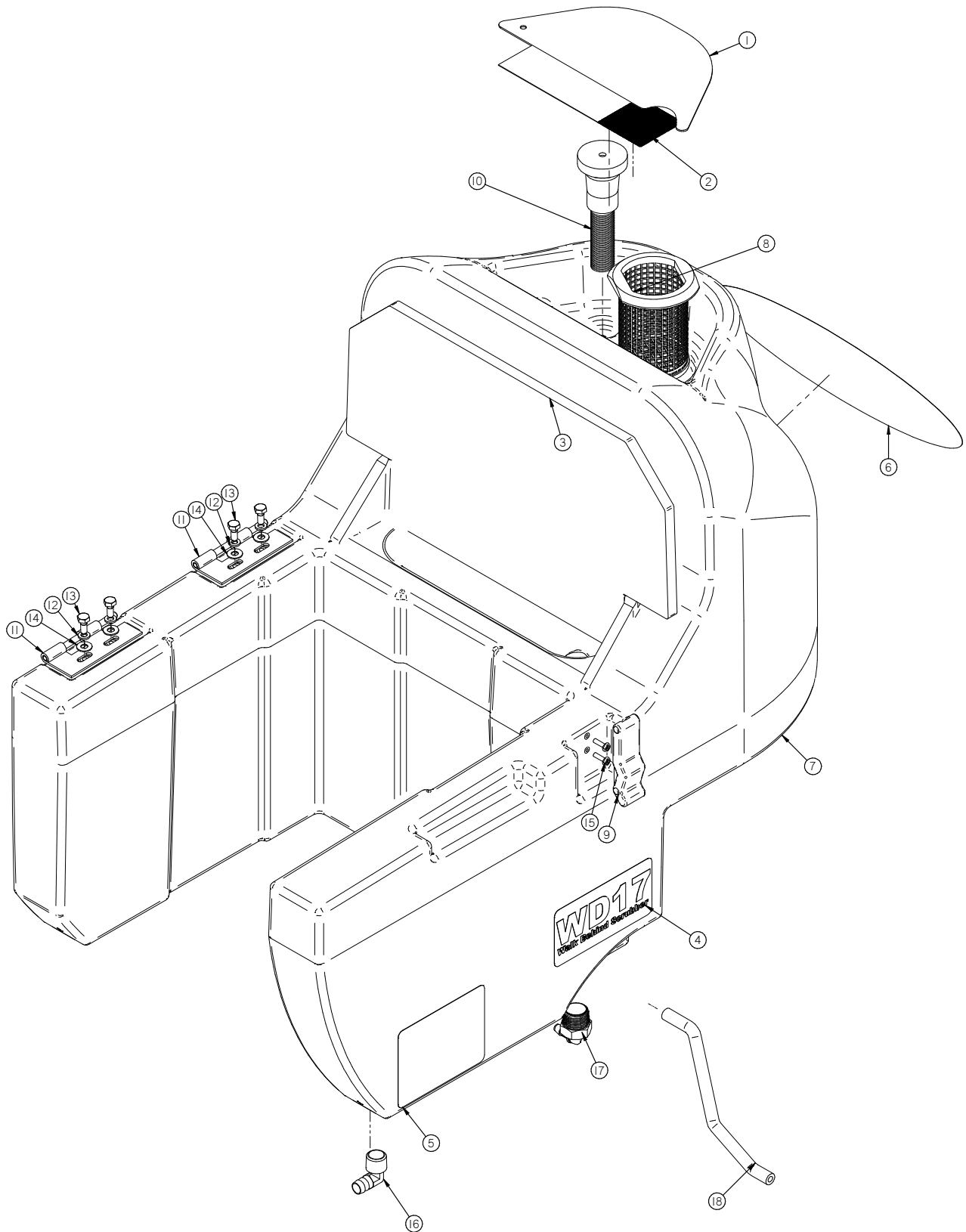
Item	Part No.	Part Description	Qty.	Item	Part No.	Part Description	Qty.
1	150-5786	STAR KNOB, 3/8-16 THREAD	1	28	H-13055	HCS 5/16" - 18 X 1" ZINK	1
2	170-1140	DISK DECK SHROUD, 17"	1	29	H-13107	HCS 3/8" - 16 X 1-1/4" ZINK	2
3	170-1167	DISK DECK CURTAIN, 17"	1	30	H-13819	HCS 3/8" - 16 X 3-1/2" SS	1
4	170-1175	DISK DECK CURTAIN BAND, 17"	1	31	H-15675	CLEVIS PIN, 3/8" X 2-1/2"	2
5	170-1601	1/2" ID X 2-3/4" LG WIRE REINF. CLEAR TUBE	1	32	H-21795	CB 1/4" - 20 X .5" ZINC	5
6	175-2700	NEG INSULATOR POST (BLACK)	1	33	H-21810	CB 5/16" - 18 X 3/4" ZINC	6
7	175-2710	POS INSULATOR POST (RED)	1	34	H-21811	CB 5/16" - 18 X 1" ZINC	12
8	175-5005	DRIVER SPACER	1	35	H-33006	FW 5/16 ID X 3/4 OD ZINC	13
9	190-1030	DECK WHEEL PIVOT BRACKET	1	36	H-33008	FW 3/8 ID X 7/8 OD ZINC	3
10	190-1035	DECK WHEEL PIVOT SUPPORT	1	37	H-33620	LW 5/16" ZINK	1
11	190-3020	4.0" WHEEL (RED)	1	38	H-33622	FW 3/8" ZINK NOM ID .4375 X OD 1.0	1
12	260-1117	17" DISK DECK	2	39	H-33622	LW 3/8" ZINK	3
13	260-1163	17" SHROUD CURTAIN	1	40	H-37020	JNYL 1/4" - 20 ZINC	5
14	260-1173	17" SHROUD CURTAIN BAND	1	41	H-37021	NYLOK 5/16" - 18 ZINC	18
15	260-2210	2-1/2" STROKE ACTUATOR (24V 900Nm)	1	42	H-37023	JNYL 5/16" - 18 ZINK	2
16	260-5000	BRUSH DRIVER RED HARD COAT (L7-LOBE_)	1	43	H-37026	JNYL 3/8 - 16 ZINK	2
17	260-5786	STAR KNOB, 3/8-16 THREAD	2	44	H-38564	M6 METRIC BOLT	8
18	260-9002	20 INCH DISK LIFTING BRACKET	1	45	H-38712	HCS M12-1.75 X 60MM ZINK	1
19	260-9579	LIFT ARM CROSS BAR 20" DISK	1	46	H-40171	NYLOK M12-1.75 ZINK	1
20	260-9594	LATERAL ARM, DISK ISK11 17" 20"	2	47	H-70113	HCS 3/8" - 16 X 2-1/2" SS	1
21	260-9595	LATERAL ARM, DISK ISK11 17" 20"	2	48	H-73753	BHSCS 1/4 - 20 X 5/8" SS	5
22	290-1233	3/8" ID, 1/2" OD, 1/4" LG BEARING	2	49	H-94071	BHSCS 5/16-18 X 1 ZINK	2
23	370-1247	BUSHING 5/16 X 1/2 X 3/16	8	50	H-NJ04C	JNYL 1/4" - 20 SS	5
24	5-447	1/2 NPT X 1/2" BARB ELBOW	1	51	H-RUE14	3/8" RUE RING COTTER	2
25	H-0157797	LW 1/4" ZINK	8	52	M-0953154	1/4" X 1" KEY	1
26	H-0434665	SLEEVE, .4395 OD X .375 ID X .75 LG	1	53	M-92825A201	.325" ID X 3/4" OD X 1/2" LDPE SPACER	2
27	H-07005	1/2" NPT LOCKNUT	2	54	M-9657K455	SPRING, 3/4" ID X 3-1/2" LG	1

20 INCH DISK SCRUB DECK



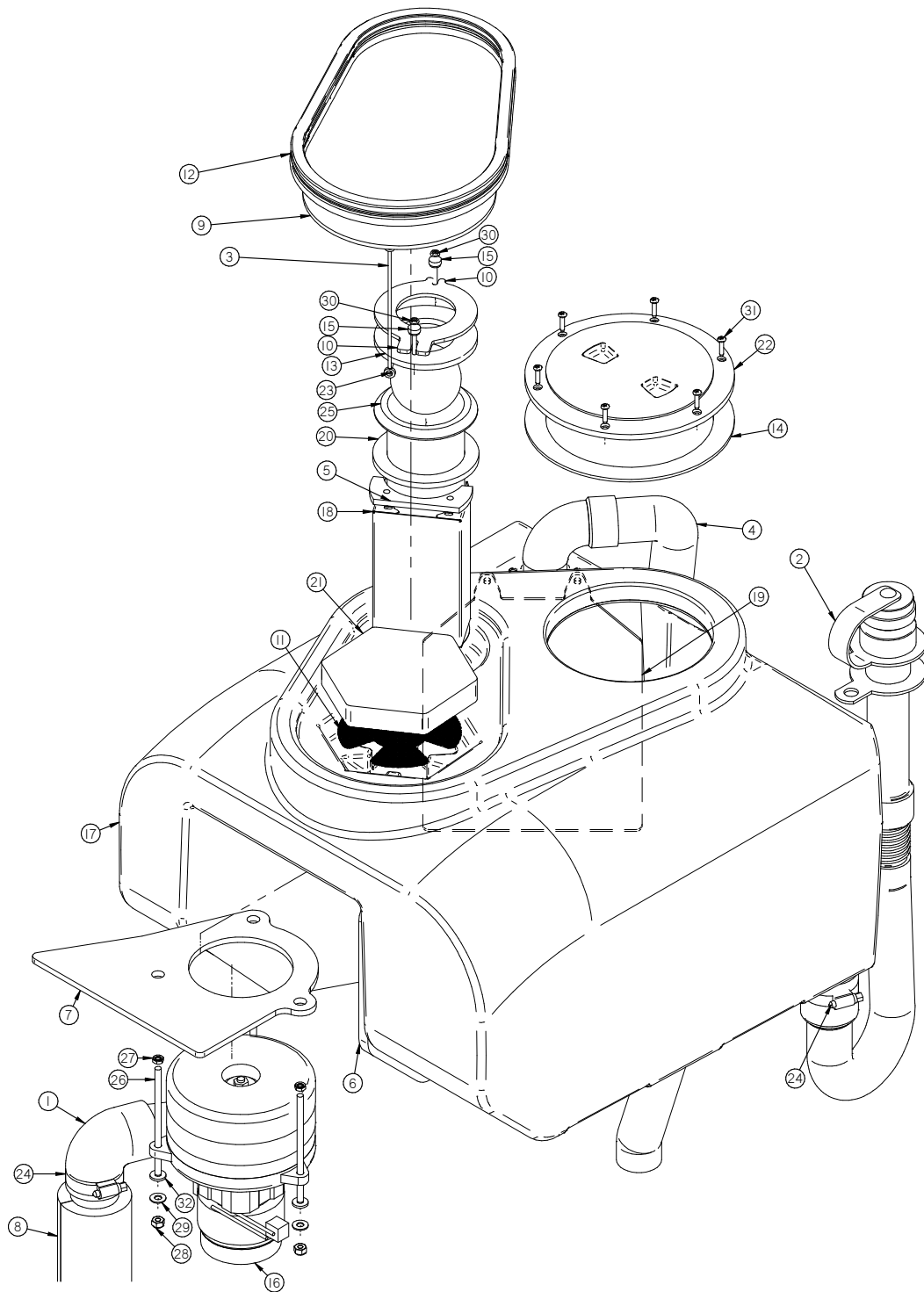
Item	Part No.	Part Description	Qty.	Item	Part No.	Part Description	Qty.
1	150-5786	STAR KNOB, 3/8-16 THREAD	1	28	H-13107	HCS 3/8"- 16 X 1-1/4" ZINK	2
2	170-0015	SHROUD CURTAIN, 20"	1	29	H-13819	HCS 3/8"- 16 X 3-1/2" SS	1
3	170-1141	DISK DECK SHROUD, 20"	2	30	H-15675	CLEVIS PIN, 3/8" X 2-1/2"	2
4	170-1166	DISK DECK CURTAIN, 20"	1	31	H-21795	CB 1/4"- 20 X 5" ZINC	5
5	170-1170	DISK CURTAIN BAND, 20"	1	32	H-21800	CB 1/4"- 20 X 5/8" ZINC	5
6	170-1601	1/2" ID X 2-3/4" LG WIRE REINF. CLEAR TUBE	1	33	H-21810	CB 5/16"- 18 X 3/4" ZINC	6
7	175-2700	NEG INSULATOR POST (BLACK)	1	34	H-21811	CB 5/16"- 18 X 1" ZINK	12
8	175-2710	POS INSULATOR POST (RED)	1	35	H-33006	FW 5/16 ID X 3/4 OD ZINC	13
9	175-5005	DRIVER SPACER	1	36	H-33008	FW 3/8 ID X 7/8 OD ZINC	3
10	190-1030	DECK WHEEL PIVOT BRACKET	1	37	H-33078	FW 1/4 ID X 5/8 OD ZINC	5
11	190-1035	DECK WHEEL PIVOT SUPPORT	1	38	H-33620	LW 5/16" ZINK	1
12	190-3020	4.0" WHEEL (RED)	1	39	H-33622	FW 3/8" ZINK NOM ID .4375 X OD 1.0	1
13	260-1120	20" DISK DECK	1	40	H-33622	LW 3/8" ZINK	3
14	260-2210	2-1/2" STROKE ACTUATOR (24V 900Nm)	1	41	H-37020	JNYL 1/4" - 20 ZINC	10
15	260-5000	BRUSH DRIVER RED HARD COAT (L7-LOBE)	1	42	H-37021	NYLOK 5/16" - 18 ZINC	18
16	260-5786	STAR KNOB, 3/8-16 THREAD	2	43	H-37023	JNYL 5/16"- 18 ZINK	2
17	260-9002	20 INCH DISK LIFTING BRACKET	1	44	H-37026	JNYL 3/8- 16 ZINK	2
18	260-9579	LIFT ARM CROSS BAR 20" DISK	1	45	H-38564	M6 METRIC BOLT	8
19	260-9585	UPPER LATERAL ARM, DISK	2	46	H-38712	HCS M12-1.75 X 60MM ZINK	1
20	260-9586	LATERAL ARM, DISK	2	47	H-40171	NYLOK M12-1.75 ZINK	1
21	290-1233	3/8" ID, 1/2" OD, 1/4" LG BEARING	2	48	H-70113	HCS 3/8"- 16 X 2-1/2" SS	1
22	370-1247	BUSHING 5/16 X 1/2 X 3/16	8	49	H-94071	BHSCS 5/16-18 X 1 ZINK	2
23	5-447	1/2 NPT X 1/2" BARB ELBOW	1	50	H-RUE14	3/8" RUE RING COTTER	2
24	H-0157797	LW 1/4" ZINK	8	51	M-0953154	1/4" X 1" KEY	1
25	H-0434665	SLEEVE, 4.395 OD X .375 ID X .75 LG	1	52	M-92825A201	.325" ID X 3/4" OD X 1/2" LDPE SPACER	2
26	H-07005	1/2" NPT LOCKNUT	2	53	M-9657K455	SPRING, 3/4" ID X 3-1/2" LG	1
27	H-13055	HCS 5/16"- 18 X 1" ZINK	1				

SOLUTION TANK ASSEMBLY



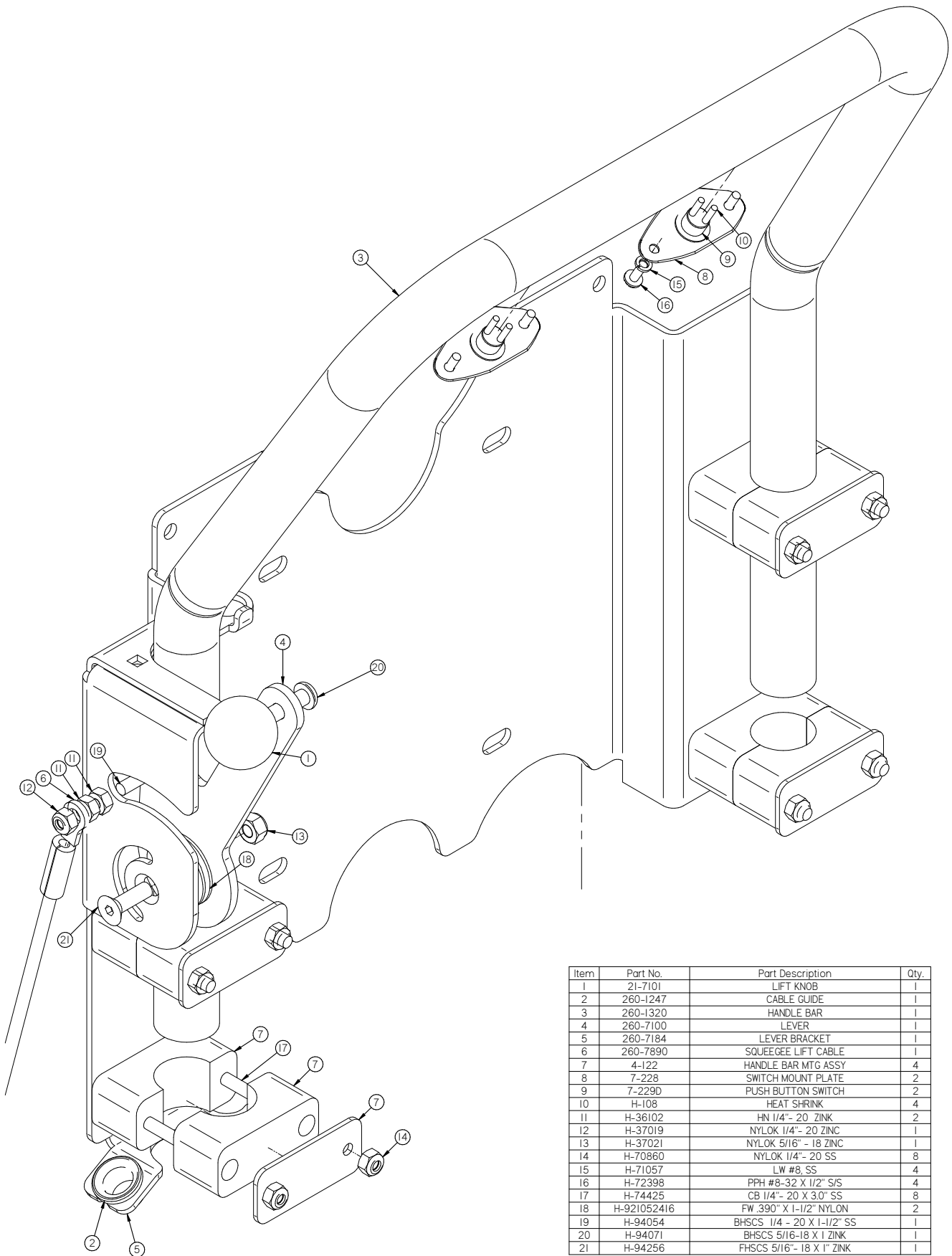
Item	Part No.	Part Description	Qty.	Item	Part No.	Part Description	Qty.
1	260-1124	BULLDOG SOLUTION FILL CURTIAN	1	10	500-1380	FILL HOSE	1
2	260-1128	SOLUTION FILL SCREEN	1	11	600-1220	4" SS HINGE	2
3	260-1142	VAC MOTOR INSULATION	1	12	H-0157797	LW 1/4" ZINK	4
4	260-3121	WD17 DECAL	2	13	H-13002	HCS 1/4"-20 X 5/8" ZINK	4
5	260-3123	"BRAND DECAL"	2	14	H-33078	FW 1/4 ID X 5/8 OD ZINK	4
6	260-3124	"BRAND DECAL"	1	15	H-72399	PPH #8-32 X 5/8" S/S	2
7	260-3140	BULLDOG SOLUTION TANK (12.5 gallon)	1	16	M-53525K58	1/2 NPT X 1/2" BARB ELBOW, BRASS	1
8	260-8910	SOLUTION FILL BASKET	1	17	M-5463K507	3/4 NPT X 3/8 BARBED X 90 DEG	1
9	4-124	LATCH	1	18	T-025B6000	BULK 1/4" ID X 5' BLUE VAC DRAIN HOSE	1

RECOVERY TANK ASSEMBLY



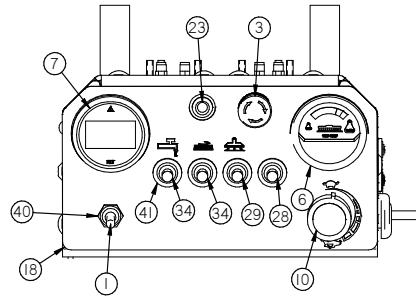
Item	Part No.	Part Description	Qty.	Item	Part No.	Part Description	Qty.
1	150-7291	EXHAUST ELBOW	1	17	260-6040	BULLDOG REC TANK (15 gallon)	1
2	175-7210	DRAIN HOSE	1	18	260-7000	BAFFLE	1
3	21-4060	LANYARD	1	19	260-7001	TANK CURTAIN	1
4	260-0115	SQUEEGEE HOSE	1	20	260-7380	STRAINER GASKET	1
5	260-1133	TANK GASKET	1	21	264-4086	VAC BOX FILTER	1
6	260-1141	VAC MOTOR INSULATION	1	22	264-7425	TANK SCREW ON LID	1
7	260-1143	VAC MOTOR GASKET	1	23	38-712	OVERFILL SHUTOFF BALL	1
8	260-2502	VAC MUFFLER	1	24	5-719	CLAMP 1 9/16 - 2 1/2" SS	2
9	260-4055	BULLDOG REC TANK VAC COVER	1	25	7-711A	SCREEN STRAINER	1
10	260-4080	BALL FLOAT TOP	1	26	H-10330725	1/4-20 X 5.0" THRD STUD ZINK	3
11	260-4081	VAC SCREEN	1	27	H-37408	KN #10-32 ZINK	3
12	260-4100	PUSH-ON RUBBER GASKET	1	28	H-70860	NYLOK 1/4"- 20 SS	2
13	260-4103	BALL FLOAT GASKET	1	29	H-71013	FW 1/4 ID X 5/8 OD SS	2
14	260-4105	6 INCH LID GASKET	1	30	H-72419	PPH #8-32 X 1-1/4" S/S	2
15	260-4180	8-32 THUMB NUT	2	31	H-72916	PPH SMS #8 X 3/4" SS	6
16	260-5251D	36V VAC MOTOR, TANGENTIAL	1	32	M-90130A029	25" NEOPRENE WASHER	2

SQUEEGEE LIFT BRACKET

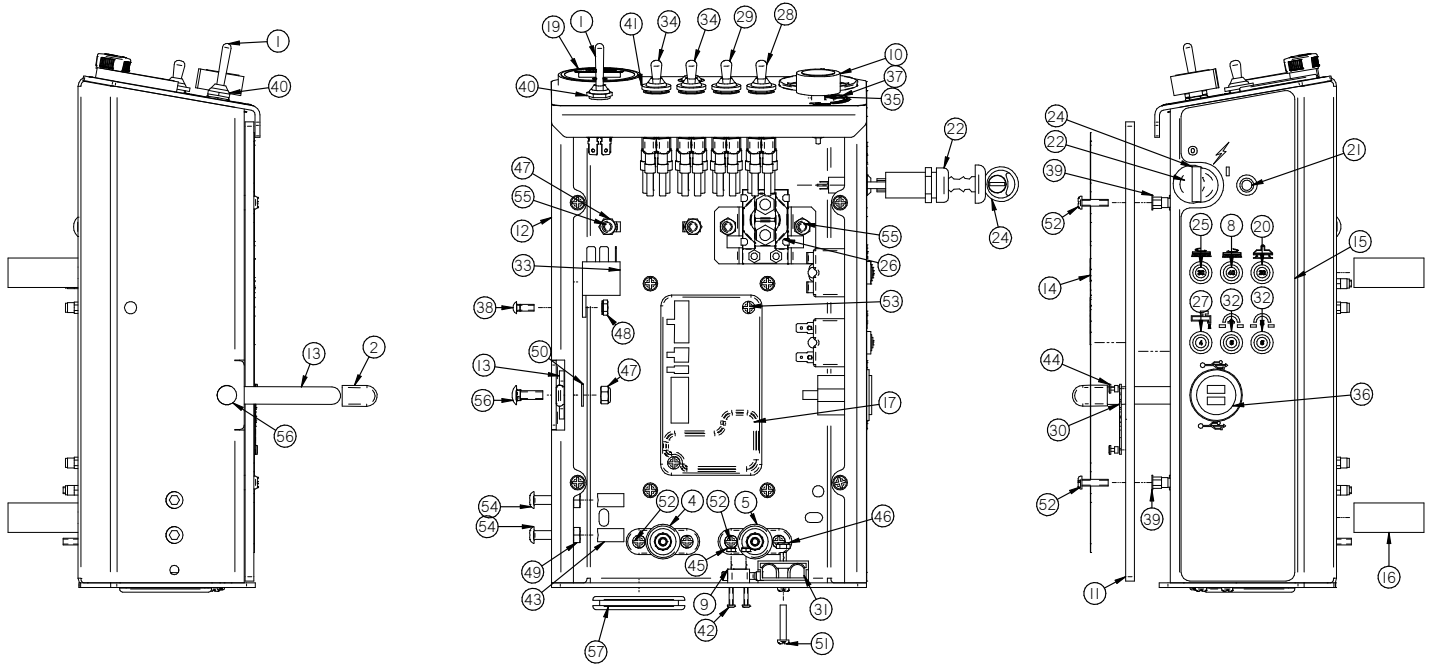


Item	Part No.	Part Description	Qty.
1	21-7101	LIFT KNOB	1
2	260-1247	CABLE GUIDE	1
3	260-1320	HANDLE BAR	1
4	260-7100	LEVER	1
5	260-7184	LEVER BRACKET	1
6	260-7890	SQUEEGEE LIFT CABLE	1
7	4-122	HANDLE BAR MTG ASSY	4
8	7-228	SWITCH MOUNT PLATE	2
9	7-229D	PUSH BUTTON SWITCH	2
10	H-108	HEAT SHRINK	4
11	H-36102	HN 1/4" - 20 ZINK	2
12	H-37019	NYLOK 1/4" - 20 ZINC	1
13	H-37021	NYLOK 5/16" - 18 ZINC	1
14	H-70860	NYLOK 1/4" - 20 SS	8
15	H-71057	LW #8, SS	4
16	H-72398	PPH #8-32 X 1/2" S/S	4
17	H-74425	CB 1/4" - 20 X 3.0" SS	8
18	H-921052416	FW .390" X 1-1/2" NYLON	2
19	H-94054	BHSCS 1/4 - 20 X 1-1/2" SS	1
20	H-94071	BHSCS 5/16-18 X 1 ZINK	1
21	H-94256	FHSCS 5/16"- 18 X 1" ZINK	1

CENTRAL COMMAND



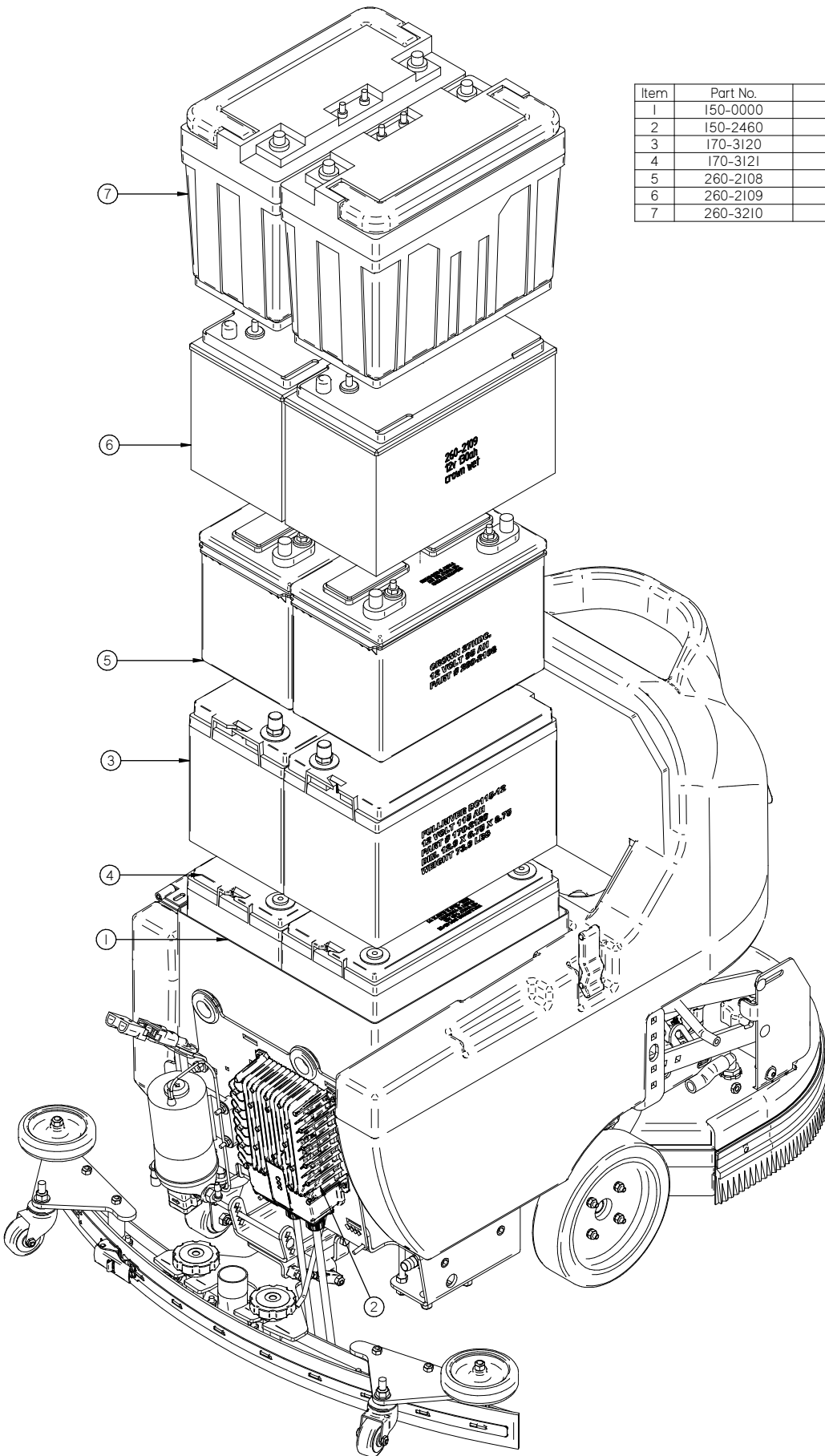
Circuit Breakers
Disk (2) 30 amp



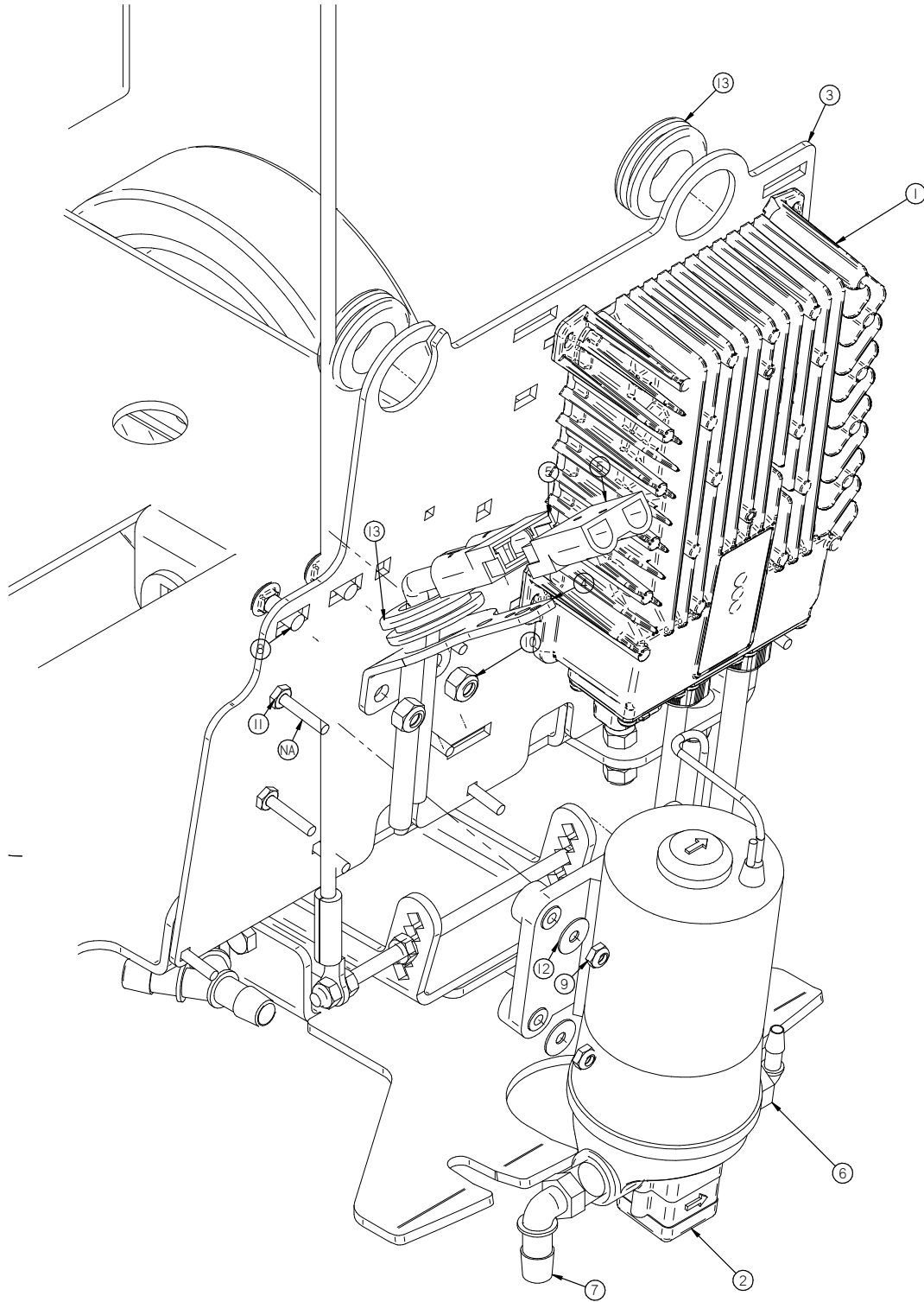
Item	Part No.	Part Description	Qty.	Item	Part No.	Part Description	Qty.
1	150-2830	SWITCH, TOGGLE, MOM/OFF/MOM (DPDT)	1	30	4-101	SERIAL NUMBER PLATE	1
2	150-4480	HANDLE GRIP (BLUE)	1	31	4-259	CONNECTOR, RED 50, HOUSING ONLY	1
3	175-0300	Emergency stop switch, 51 series, IC/O	1	32	4-284	FUSE, RESETTABLE, 6 AMP, 50V DC MAX	2
4	175-2700	NEG INSULATOR POST (BLACK)	1	33	5-293	24V 15 AMP RELAY	1
5	175-2710	POS INSULATOR POST (RED)	1	34	650-2830	SWITCH, TOGGLE, MOM/OFF/MOM (DPDT)	2
6	190-4852	BRUSH PRESSURE GAUGE, 40 AMP	1	35	7-292	5K POTENTIOMETER	1
7	190-4855	24V BATTERY AND HOUR METER	1	36	700-2590	DUAL USB PORTS	1
8	190-9609	FUSE, RESETTABLE, 40 AMP	1	37	H-0147994	3/8-32 X 1/2 PANEL NUT	1
9	21-2230	MICRO SWITCH	1	38	H-0172518	CB #10-32 X 1/2" SS	1
10	21-4520	SPEED CONTROL KNOB, RED	1	39	H-1032HCN	HCN #10-32	10
11	260-1997	CONTROL PANEL COVER	1	40	H-11196	PROTECTIVE BOOT, TOGGLE SWITCH, (RED)	1
12	260-1998	CENTRAL COMMAND BULLDOG	1	41	H-11300	PROTECTIVE BOOT, TOGGLE SWITCH, (BLACK)	4
13	260-2003	VALVE LEVER (24V CC)	1	42	H-28667	PHP MS 4-40 X 3/4"	2
14	260-2021	CENTRAL COMMAND STICKER (FRONT)	1	43	H-33372	SHAFT COLLAR, 3/8" ID	2
15	260-2025	CENTRAL COMMAND STICKER (RH SIDE)	1	44	H-41007	AB4-3A BLIND RIVET ALUMINUM	4
16	260-2701	CENTRAL COMMAND SPACER	4	45	H-70854	NYLOK #4-40 SS	2
17	260-2898	DRIVE 24V/36V, 70 AMP CONTROLLER	1	46	H-70856	NYLOK #8-32 SS	1
18	260-3120	CENTRAL COMMAND STICKER (TOP)	1	47	H-70860	NYLOK 1/4" - 20 SS	5
19	260-3215	INVENTUS BATTERY GAUGE	1	48	H-70923	KN #10-32 SS	1
20	260-8270	FUSE RESETTABLE, 20 AMP	1	49	H-70925	KN 1/4-20 S/S	2
21	290-2320	BLUE LIGHT	1	50	H-71013	FW 1/4 ID X 5/8 OD SS	1
22	290-2334	KEY SWITCH (WITH KEY)	1	51	H-72418	PPH #8-32 X 1" S/S	2
23	290-2340	GREEN LIGHT	1	52	H-72534	PPH #10-32 X 3/4" S/S	12
24	290-2344	KEY SET (REPLACE)	1	53	H-72536	PPH #10-32 X 1" S/S	2
25	290-9609	FUSE, RESETTABLE, 30 AMP	2	54	H-73752	BHSCS 1/4 - 20 X 1/2" SS	2
26	349-2331	RELAY, 24V, SMALL W/FLAT MTG PLATE	1	55	H-74418	CB 1/4"- 20 X 5/8" S/S	4
27	349-9604	FUSE, RESETTABLE, 4 AMP, 50V DC MAX	1	56	H-74419	CB 1/4"- 20 X .75" SS	1
28	370-2831	SWITCH, TOGGLE, ON/OFF/ON (DPDT)	1	57	H-9307K99	GROMMET, 2" ID X 2-5/8" OD	1
29	370-8210	SWITCH, TOGGLE, ON/ON (DPDT)	1				

BATTERY PACK AND CHARGERS

Item	Part No.	Part Description	Qty.
1	150-0000	MICRO MAG BATTERY TRAY	1
2	150-2460	CHARGER	1
3	170-3120	12 VOLT 115 AH US	2
4	170-3121	BATTERY, 12 V, 140 AH US	2
5	260-2108	BATTERY, 12 V, 95 AH	2
6	260-2109	12v 130AH Crown Wet Battery	1
7	260-3210	INVENTUS LITHIUM ION BATTERY 24V80	2



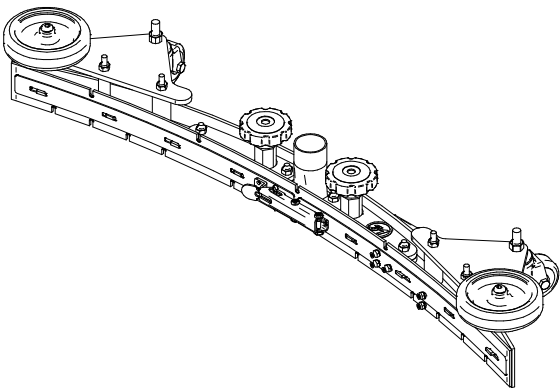
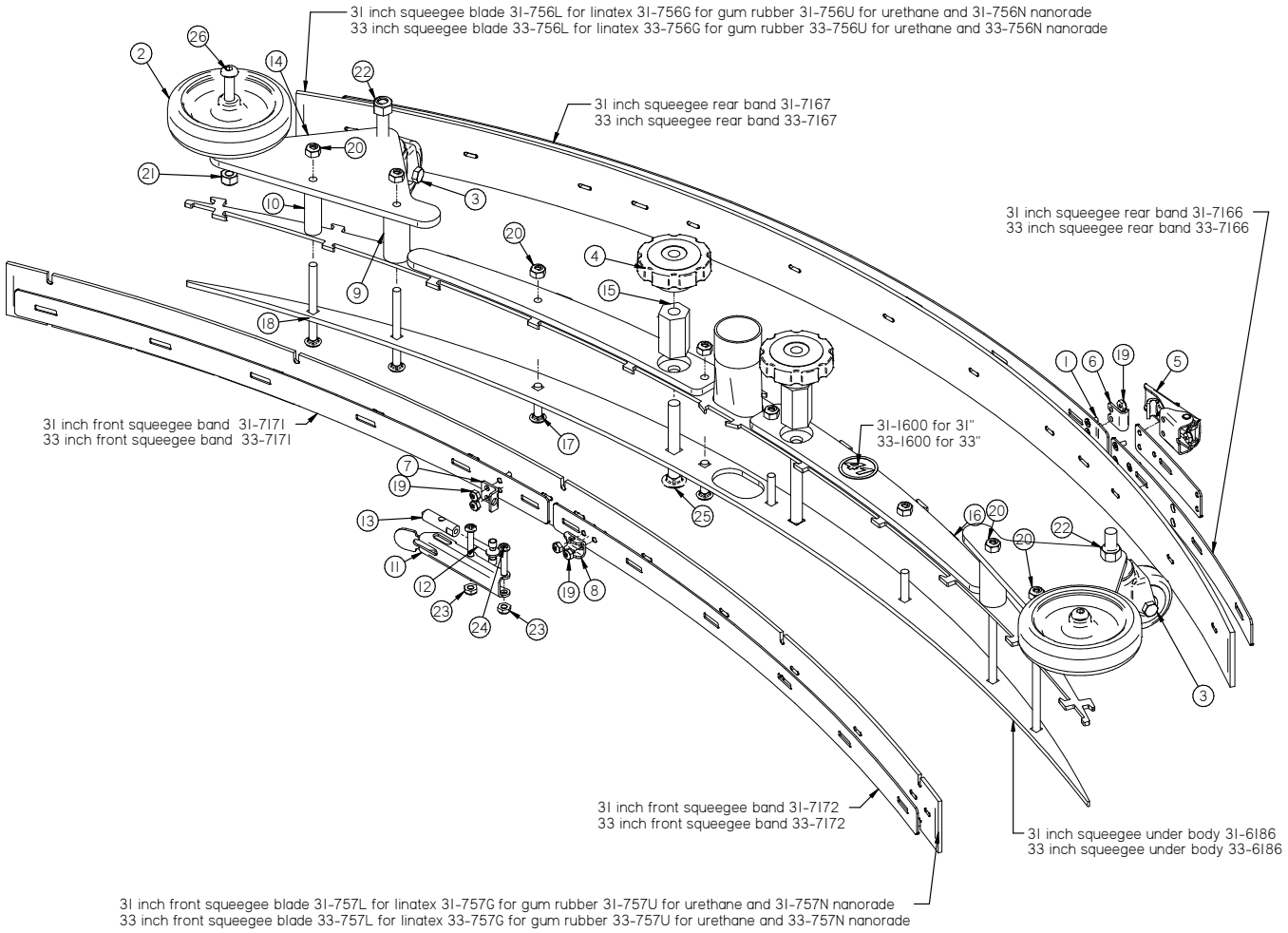
OPTIONS



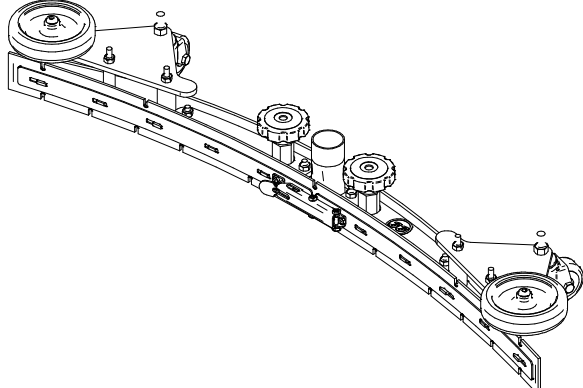
Item	Part No.	Part Description	Qty.
1	150-2460	CHARGER	1
2	253-8910	24V 100 PSI PUMP, WATER JET	1
3	260-1014	UTILITIES PLATE SK11	1
4	264-9516	CHARGER CONECTOR BRACKET	1
5	4-259	CONNECTOR, RED 50, HOUSING ONLY	2
6	400-1225	.375 NPT X .25 BARB X 90 DEG	1
7	H-04763	ELBOW, 90 DEG X 3/8" MNPT X 1/2" BARB, NYLON	1
8	H-21810	CB 5/16" - 18 X 3/4" ZINC	2
9	H-37015	NYLOK #10-32 ZINC	2
10	H-37021	NYLOK 5/16" - 18 ZINC	1
11	H-37408	KN #10-32 ZINC	1
12	H-71010	FW #10 ID X 11/16 OD SS	2
13	H-9307K74	GROMMET, 1" ID X 1-3/4" OD BUNA-N	3

SQUEEGEES

Item	Part No.	Part Description	Qty.	Item	Part No.	Part Description	Qty.
1		FHSCS #6-32 X 3/8" S/S	9	14	35-7183	SQUEEGEE CASTER BRACKET	2
2	150-7600	4" SIDE WHEEL (GREY)	2	15	35-8460	STANDOFF, 1.5"	2
3	253-7570	CASTER	2	16	45-6187	SQUEEGEE WEIGHT	2
4	260-5786	STAR KNOB, 3/8-16 THREAD	2	17	H-21157	CB 1/4"- 20 X 1.25" ZINK	4
5	29-7164	LATCH	1	18	H-21165	CB 1/4"- 20 X 3.0" ZINK	4
6	29-7168	BAND CLIP	1	19	H-37010	NYLOK #6-32 SS	9
7	29-7170	FRONT BAND CLIP	1	20	H-37019	NYLOK 1/4"- 20 ZINK	8
8	29-7173	FRONT BAND CLIP	1	21	H-37021	NYLOK 5/16" - 18 ZINK	2
9	35-0007	SQUEEGEE ROLLER SPACER	2	22	H-37025	NYLOK 3/8"-16 ZINK	2
10	35-0008	SQUEEGEE ROLLER SPACER	2	23	H-70858	NYLOK #10-32 SS	2
11	35-0125	LATCH BODY	1	24	H-72536	PPH #10-32 X 1" S/S	2
12	35-0125-03	1/4-20 X 3.00 LG EYE BOLT, FULL THREAD	1	25	H-74441	CB 3/8"- 16 X 3.0" SS	2
13	35-0126	RAM TIP	1	26	H-94074	BHSCS 5/16-18 X 1.75 ZINK	2



31 INCH SQUEEGEE ASSEMBLY 231-7180



33 INCH SQUEEGEE ASSEMBLY 233-7180

COMMON WEAR PARTS

ROUND DISK BRUSHES:

NOTICE

The ## in Disk Column Denotes Desk Pad Size: 17" or 20"

BRUSHES	DISK	LEVEL
Midi Grit	706-##C	Medium
Light Grit	706-##PS	Moderate
Nylon	706-##N	Light
Pad Driver	706-##D	
Pad Driver Pad Retainer	#40-433	
Pad Driver Spring Clip	#40-423	

ROUND DISK PADS:

NOTICE

The ## in Disk Column Denotes Desk Pad Size: 17" or 20"

DISK PADS	DISK	LEVEL	COLOR
Super Black	##-422BB	Very High	Black
Black	##-422B	High	Black
Brown	##-422BR	High	Brown
Green	##-422G	Medium	Green
Blue	##-422BL	Moderate	Blue
Red	##-422R	Moderate	Red
White	##-422W	Light	White

SQUEEGEE BLADE KITS & COMPLETE SQUEEGEE ASSEMBLIES:

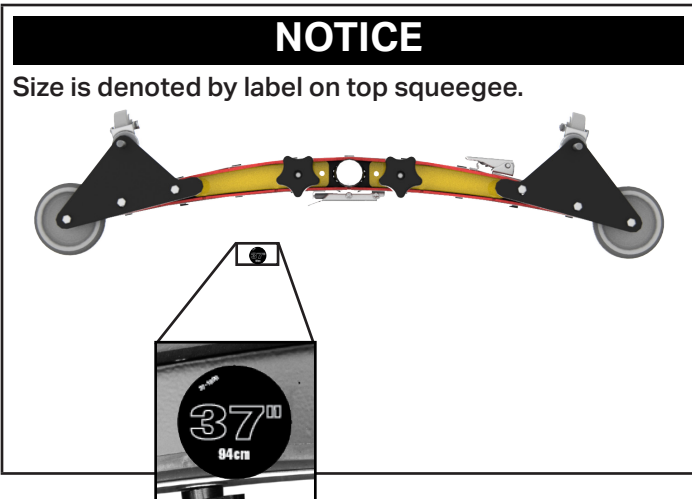
SQUEEGEE SIZE	17" DECK	20" DECK	24" DECK
31" Squeegee	Standard	N/A	N/A
33" Squeegee	N/A	Standard	N/A

SQUEEGEE SIZE	LINATEX BLADE KIT	GUM RUBBER BLADE KIT	URETHANE BLADE KIT	NANORADE BLADE KIT	COMPLETE SQUEEGEE ASSEMBLIES
31" Squeegee	231-770L	231-770G	231-770U	231-756N	231-7180
33" Squeegee	233-770L	233-770G	233-770U	233-756N	233-7180

SQUEEGEE MATERIAL:	USED FOR:
LINATEX	Provides best wear and tear resistance. Not designed for use with harsh chemicals.
URETHANE	Provides best resistance when dealing with harsh chemicals, oils, fuels, etc.
GUM	Provides best drying performance on rough/ grouted floor types by sealing over irregularities. Short life.
NANORADE	Increased durability, optimal water pick up and reduced friction.

NOTICE
Squeegee blade kits include (1) Rear Blade, (1) Front Blade, and (2) Caster Wheels with hardware.

NOTICE
Squeegee Assemblies (complete) listed above all come with Linatex blades.



BLANK
THIS PAGE WAS INTENTIONALLY LEFT BLANK

